

Date of Issue: September 2019

Affected Publication: ANSI/API Specification 17D/ISO 13628-4, *Design and Operation of Subsea Production Systems—Subsea Wellhead and Tree Equipment*, Second Edition, May 2011

Errata 8

(includes changes in the Errata dated September 2011, Errata 2 dated January 2012, Errata 3 dated June 2013, Errata 4 dated July 2013, Errata 5 dated October 2013, Errata 6 dated August 2015, and Errata 7 dated October 2015)

(This page intentionally left blank for two-sided printing, so drawings and tables would be on facing pages.)

Replace Tables 11, 12, 13 and 14 with the following Tables 11, 12, 13 and 14.

Dimensions in red are corrected values or additional data previously omitted in error.

NOTE These four tables are have the same information (with additions and corrections) as the previous four tables, but the data is organized differently, such that the content of each table has changed.

Table 11 — Hub Dimensions for Type 17 SV Flanges – USC Units

NOTE: Dimensions are in inches.

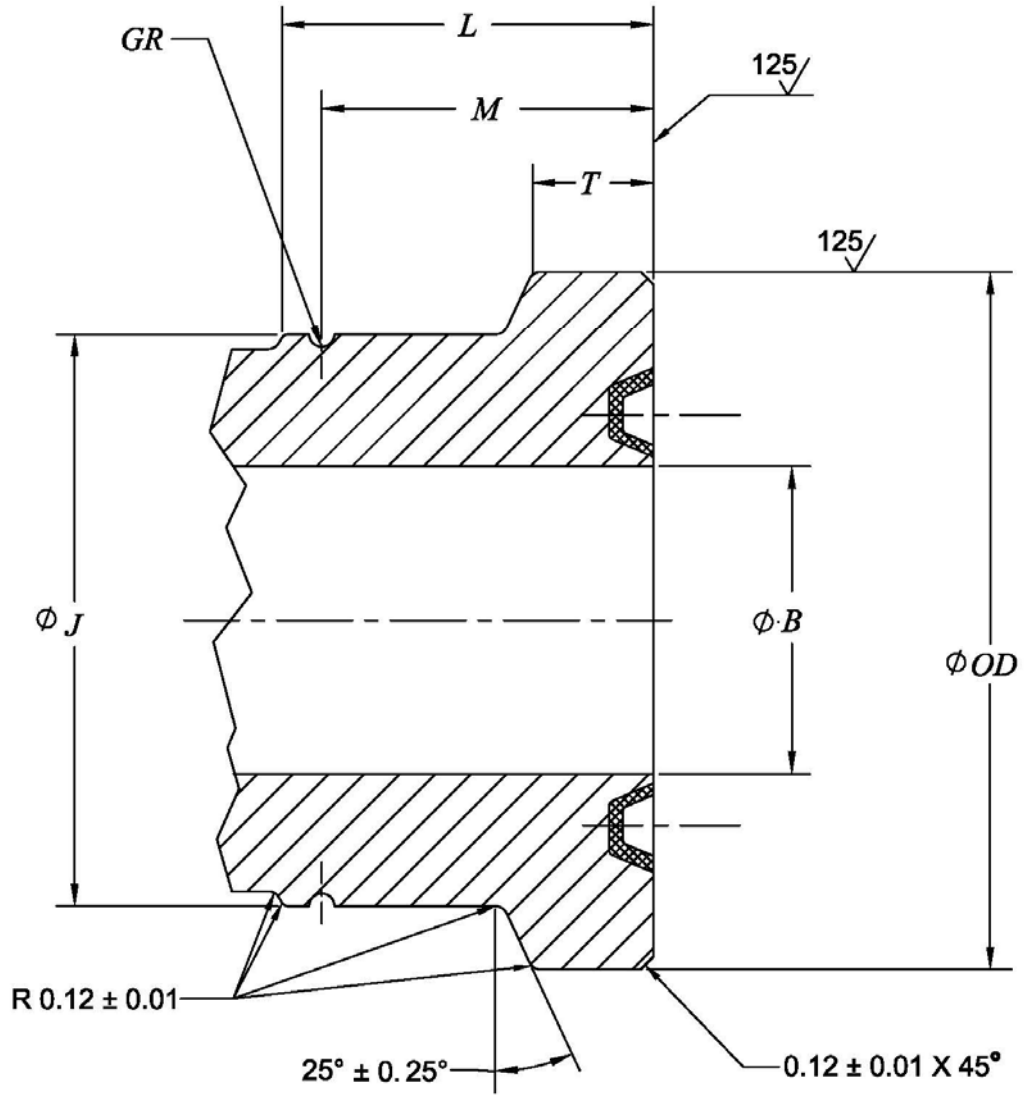


Table 11 — Continued

Hub dimensions for 17SV flanges for 5000 psi rated working pressure — USC units

Dimensions in inches.

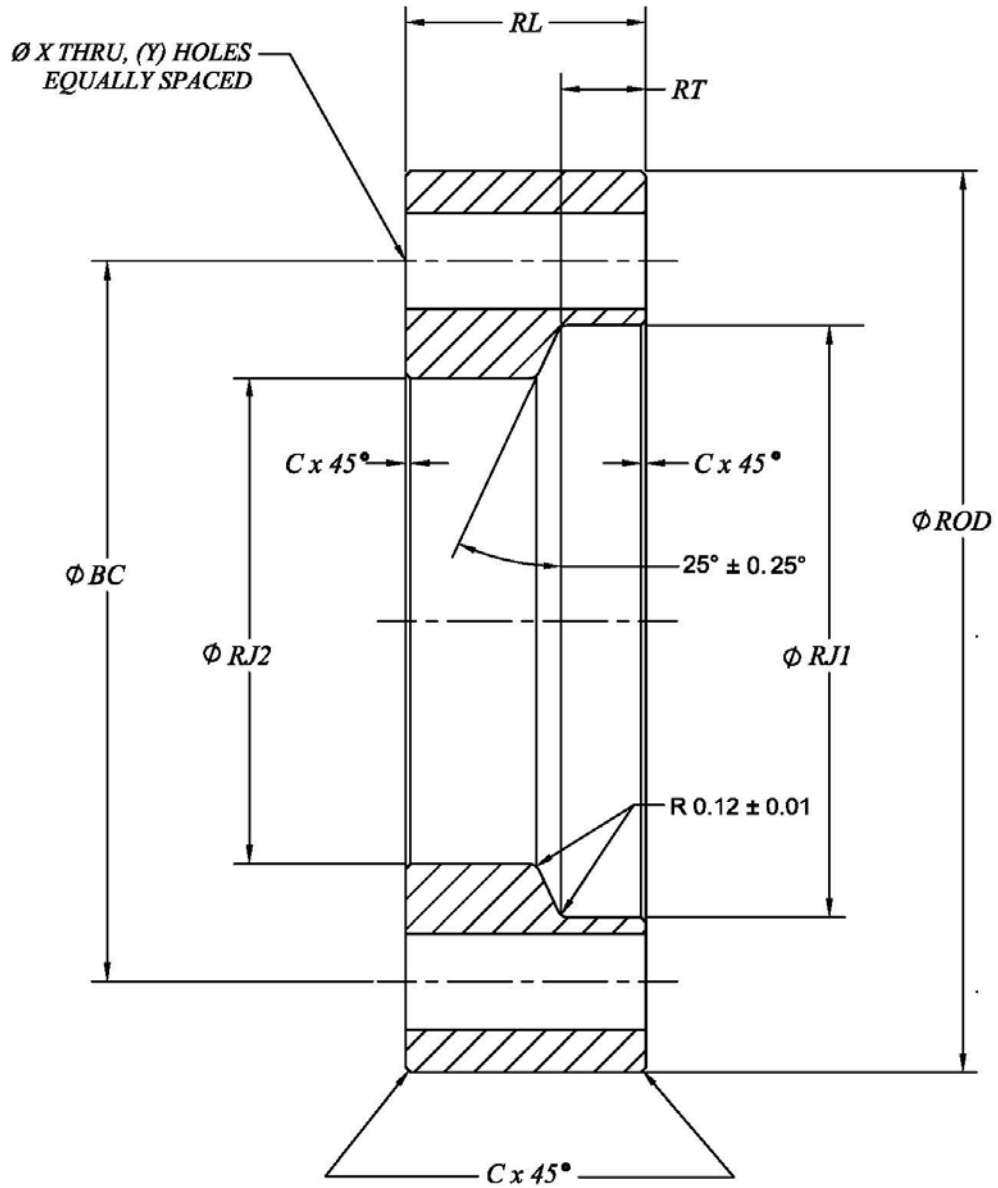
Nominal size (in)	Maximum Bore	Outside diameter	Total thickness	Large diameter of neck	Length of neck	Groove location	Retainer groove radius	Ring groove
	<i>B</i>	<i>OD</i>	<i>T</i>	<i>J</i>	<i>L</i>	<i>M</i>	<i>GR</i>	
Tolerance:	maximum	± 0.03	+ 0.03/ -0	+ 0.03/ -0	minimum	+0.030/-0	+0.005/-0	
2 1/16	2.09	5.03	1.17	3.66	3.28	2.907	0.125	BX-152
2 9/16	2.59	5.78	1.17	4.41	3.28	2.907	0.125	BX-153
3 1/16	3.09	6.31	1.17	4.94	3.43	3.067	0.125	BX-154
4 1/16	4.09	7.62	1.20	6.25	3.76	3.382	0.125	BX-155
5 1/8	5.16	9.38	1.41	7.75	4.73	4.357	0.125	BX-169
7-1/16	7.09	10.70	1.62	9.07	5.54	4.979	0.188	BX-156
9	9.03	13.25	1.62	11.62	6.11	5.551	0.188	BX-157
11	11.03	16.25	1.65	14.62	6.93	6.370	0.188	BX-158
13 5/8	13.66	20.62	1.87	19.00	7.15	6.614	0.188	BX-160

Hub dimensions for 17SV flanges for 10,000 psi rated working pressure — USC units

Dimensions in inches.

Nominal size (in)	Maximum Bore	Outside diameter	Total thickness	Large diameter of neck	Length of neck	Groove location	Retainer groove radius	Ring groove
	<i>B</i>	<i>OD</i>	<i>T</i>	<i>J</i>	<i>L</i>	<i>M</i>	<i>GR</i>	
Tolerance:	maximum	± 0.03	+ 0.031/-0	+ 0.03/-0	minimum	+ 0.03/-0	+0.005/ -0	
1 13/16	1.84	4.50	1.166	3.250	3.282	2.907	0.125	BX-151
2 1/16	2.09	5.00	1.166	3.750	3.282	2.907	0.125	BX-152
2 9/16	2.59	5.80	1.166	4.550	3.302	2.927	0.125	BX-153
3 1/16	3.09	6.93	1.197	5.680	3.666	3.291	0.125	BX-154
4 1/16	4.09	8.44	1.310	6.812	4.277	3.902	0.125	BX-155
5 1/8	5.16	9.96	1.500	8.335	4.732	4.357	0.125	BX-169
7-1/16	7.09	13.66	1.653	12.035	6.204	5.641	0.188	BX-156
9	9.03	16.25	1.653	14.625	7.270	6.707	0.188	BX-157
11	11.03	18.87	2.035	17.245	8.153	7.591	0.188	BX-158
13 5/8	13.66	22.25	2.309	20.625	9.531	8.969	0.188	BX-159

Table 12 — Ring Dimensions for Type 17 SV Flanges — USC Units



NOTE: Dimensions are in inches.

Table 12 — Continued

Ring dimensions for type 17SV flanges for 5000 psi rated working pressure — USC units

Dimensions in inches.

Nominal size (in)	Outside diameter of ring	Depth of large ID	Large ID of ring	Small ID of ring	Length of ring	Chamfer	Bolt circle	Bolt hole Qty.	Diameter of bolt holes
	ROD	RT	RJ1	RJ2	RL	C	BC	Y	X
Tolerance:	+0.06/ -0	+0.06/ -0	+0.03/-0	+0.03/-0	+0.12/-0	+0.01/-0	See Figure		See below
2 1/16	8.50	0.96	5.09	3.72	2.45	0.12	6.50	8	1.00 ^{+0.06} / _{-0.02}
2 9/16	9.62	0.96	5.84	4.47	2.45	0.12	7.50	8	1.12 ^{+0.06} / _{-0.02}
3 1/16	10.50	0.96	6.38	5.00	2.60	0.12	8.00	8	1.25 ^{+0.06} / _{-0.02}
4 1/16	12.25	1.00	7.69	6.31	2.93	0.12	9.50	8	1.38 ^{+0.06} / _{-0.02}
5 1/8	14.75	1.21	9.44	7.82	3.90	0.12	11.50	8	1.62 ^{+0.09} / _{-0.02}
7-1/16	15.50	1.42	10.76	9.16	4.46	0.19	12.50	12	1.50 ^{+0.06} / _{-0.02}
9	19.00	1.42	13.31	11.69	5.03	0.19	15.50	12	1.75 ^{+0.09} / _{-0.02}
11	23.00	1.45	16.31	14.69	5.85	0.19	19.00	12	2.00 ^{+0.09} / _{-0.02}
13 5/8	26.50	1.67	20.69	19.06	6.06	0.19	23.25	16	1.75 ^{+0.09} / _{-0.02}

Ring dimensions for type 17SV flanges for 10,000 psi rated working pressure — USC units

Dimensions in inches.

Nominal size (in)	Outside diameter of ring	Depth of large ID	Large ID of ring	Small ID of ring	Length of ring	Chamfer	Bolt circle	Bolt hole Qty.	Diameter of bolt holes
	ROD	RT	RJ1	RJ2	RL	C	BC	Y	X
Tolerance:	+0.06/ -0	+0.06/ -0	+0.03/ -0	+0.03/ -0	+0.12/ -0	+0.01/ -0	See Figure		See below
1 13/16	7.38	0.96	4.562	3.31	2.45	0.12	5.75	8	0.88 ^{+0.06} / _{-0.02}
2 1/16	7.88	0.96	5.062	3.81	2.45	0.12	6.25	8	0.88 ^{+0.06} / _{-0.02}
2 9/16	9.12	0.96	5.862	4.61	2.47	0.12	7.25	8	1.00 ^{+0.06} / _{-0.02}
3 1/16	10.62	1.00	6.992	5.74	2.83	0.12	8.50	8	1.12 ^{+0.06} / _{-0.02}
4 1/16	12.44	1.11	8.500	6.88	3.44	0.12	10.19	8	1.25 ^{+0.06} / _{-0.02}
5 1/8	14.06	1.30	10.022	8.40	3.90	0.12	11.81	12	1.25 ^{+0.06} / _{-0.02}
7-1/16	18.88	1.45	13.722	12.10	5.12	0.19	15.88	12	1.62 ^{+0.09} / _{-0.02}
9	21.75	1.45	16.312	14.69	6.19	0.19	18.75	16	1.62 ^{+0.09} / _{-0.02}
11	25.75	1.83	18.932	17.31	7.07	0.19	22.25	16	1.88 ^{+0.09} / _{-0.02}
13 5/8	30.25	2.11	22.312	20.69	8.45	0.19	26.50	20	2.00 ^{+0.09} / _{-0.02}

Table 13 — Hub Dimensions for Type 17 SV Flanges — SI Units

NOTE: Dimensions are in millimeters.

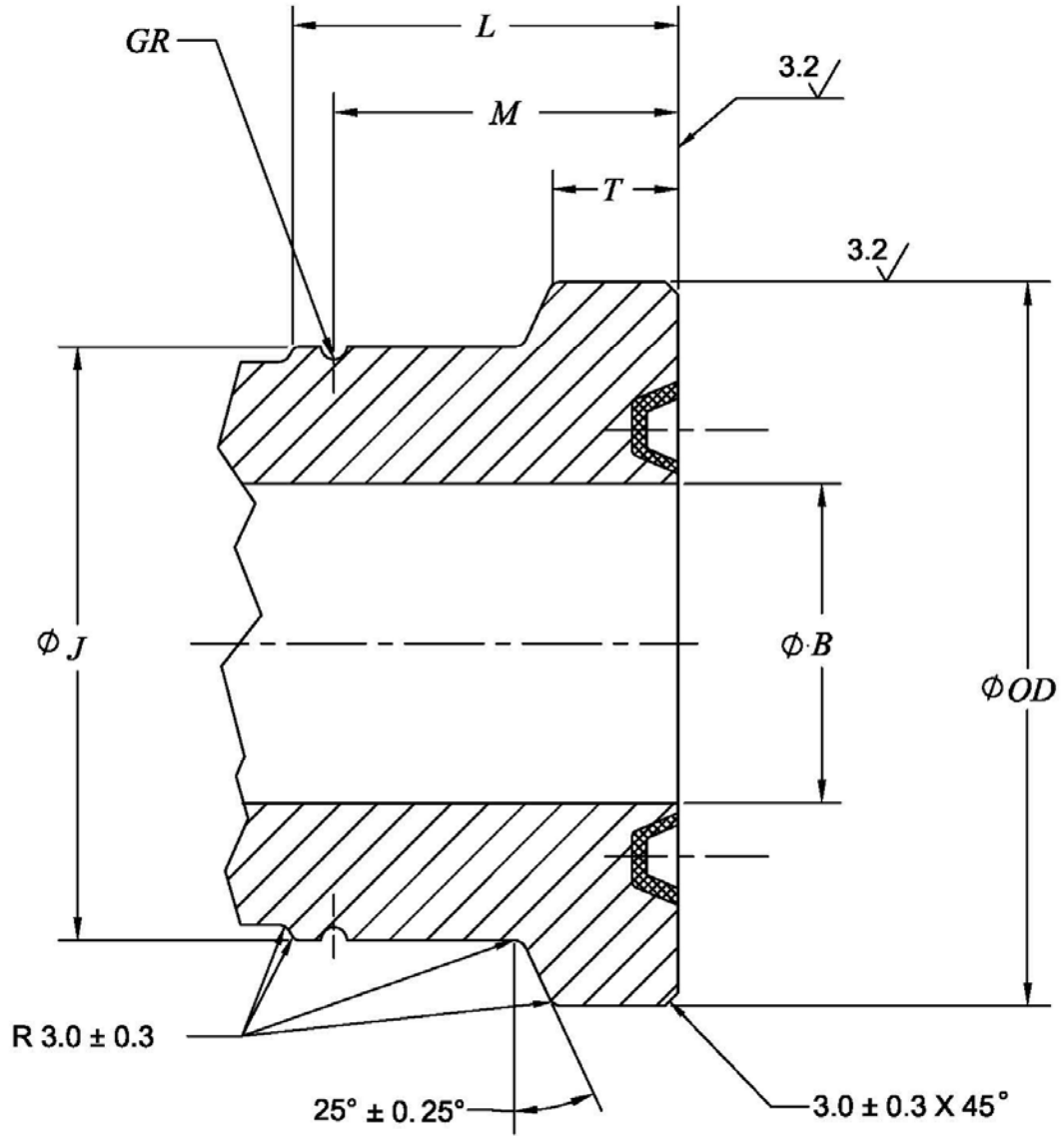


Table 13 — Continued

Hub dimensions for 17SV flanges for 34.5 MPa rated working pressure — SI units

Dimensions in millimeters.

Nominal size (in)	Maximum Bore	Outside diameter	Total thickness	Large diameter of neck	Length of neck	Groove location	Retainer groove radius	Ring groove
	<i>B</i>							
Tolerance:	maximum	± 0.8	+ 0.8/ -0	+ 0.8/ -0	minimum	+ 0.8/ -0	+0.1/ -0	
2 1/16	53.1	128	29.6	93	84	73.8	3	BX-152
2 9/16	65.8	147	29.6	112	84	73.8	3	BX-153
3 1/16	78.5	160	29.6	126	88	77.9	3	BX-154
4 1/16	103.9	194	30.5	159	96	85.9	3	BX-155
5 1/8	131.1	238	35.8	197	120	110.7	3	BX-169
7-1/16	180.1	272	41.2	231	141	126.5	5	BX-156
9	229.4	337	41.2	295	156	141.0	5	BX-157
11	280.2	413	42.0	371	176	161.8	5	BX-158
13 5/8	347.0	524	47.5	483	182	168.0	5	BX-160

Hub dimensions for 17SV flanges for 69.0 MPa rated working pressure — SI units

Dimensions in millimeters.

Nominal size (in)	Maximum Bore	Outside diameter	Total thickness	Large diameter of neck	Length of neck	Groove location	Retainer groove radius	Ring groove
	<i>B</i>							
Tolerance:	maximum	± 0.8	+ 0.8/ -0	+ 0.8/ -0	minimum	+ 0.8/ -0	+0.1/ -0	
1 13/16	46.7	114	29.6	82.6	84	74	3	BX-151
2 1/16	53.1	127	29.6	95.3	84	74	3	BX-152
2 9/16	65.8	147	29.6	115.6	84	75	3	BX-153
3 1/16	78.5	176	30.5	144.3	93	84	3	BX-154
4 1/16	103.9	214	35.8	173.0	109	99	3	BX-155
5 1/8	131.1	253	41.2	211.7	121	111	3	BX-169
7-1/16	180.1	347	41.2	305.7	158	143	5	BX-156
9	229.4	413	41.2	371.5	185	170	5	BX-157
11	280.2	479	51.7	438.0	207	193	5	BX-158
13 5/8	347.0	565	58.6	523.9	242	228	5	BX-159

Table 14 — Ring Dimensions for Type 17 SV Flanges – SI Units

NOTE: Dimensions are in millimeters

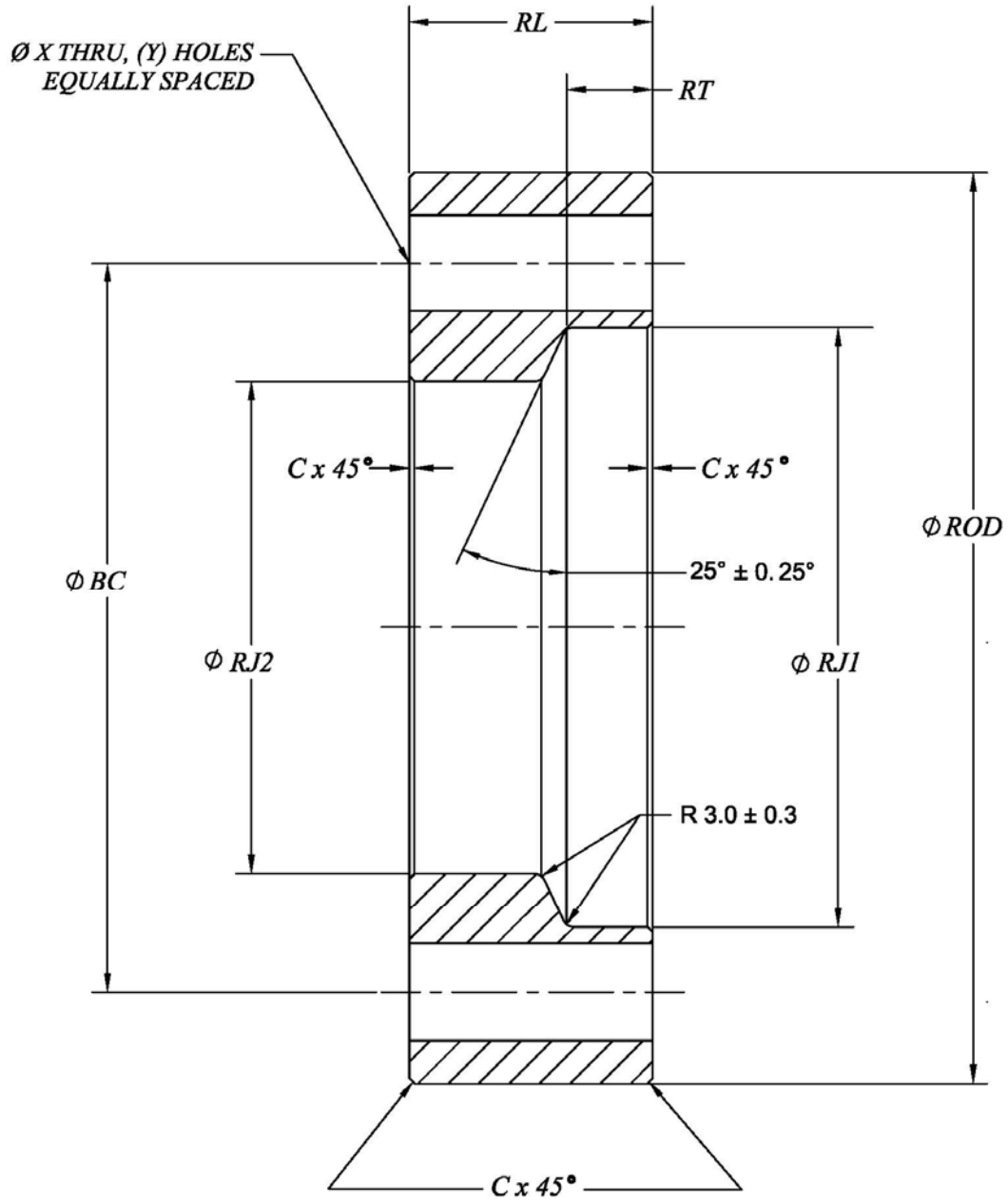


Table 14 — Continued

Ring dimensions for type 17SV flanges for 34.5 MPa rated working pressure — SI units

Dimensions in millimeters.

Nominal size (in)	Outside diameter of ring	Depth of large ID	Large ID of ring	Small ID of ring	Length of ring	Chamfer	Bolt circle	Number of bolt holes	Diameter of bolt holes
	<i>ROD</i>	<i>RT</i>	<i>RJ1</i>	<i>RJ2</i>	<i>RL</i>	<i>C</i>	<i>BC</i>	<i>Y</i>	<i>X</i>
Tolerance:	+ 2/ -0	+ 1.6/ -0	+ 0.8/ -0	+ 0.8/ -0	+ 3/ -0	+ 0.3/ -0	See Figure		See below
2 1/16	216	24.4	129.3	94.5	63	3	165.1	8	26 ⁺² / _{-0.5}
2 9/16	246	24.4	148.4	113.5	63	3	190.5	8	29 ⁺² / _{-0.5}
3 1/16	267	24.4	162.0	127.0	66	3	203.2	8	32 ⁺² / _{-0.5}
4 1/16	312	25.4	195.3	160.4	75	3	241.3	8	36 ⁺² / _{-0.5}
5 1/8	375	30.7	239.8	198.6	99	3	292.1	8	42 ^{+2.5} / _{-0.5}
7-1/16	394	36.1	273.4	232.1	114	5	317.5	12	39 ⁺² / _{-0.5}
9	483	36.1	338.2	296.9	128	5	393.7	12	45 ^{+2.5} / _{-0.5}
11	585	36.8	414.4	373.1	149	5	482.6	12	51 ^{+2.5} / _{-0.5}
13 5/8	673	42.4	525.4	484.2	154	5	590.6	16	45 ^{+2.5} / _{-0.5}

Ring dimensions for type 17SV flanges for 69.0 MPa rated working pressure — SI units

Dimensions in millimeters.

Nominal size (in)	Outside diameter of ring	Depth of large ID	Large ID of ring	Small ID of ring	Length of ring	Chamfer	Bolt circle	Number of bolt holes	Diameter of bolt holes
	<i>ROD</i>	<i>RT</i>	<i>RJ1</i>	<i>RJ2</i>	<i>RL</i>	<i>C</i>	<i>BC</i>	<i>Y</i>	<i>X</i>
Tolerance:	+ 2 / -0	+ 1.6/ -0	+ 0.8/ -0	+ 0.8/ -0	+ 3 / -0	+ 0.3 / -0	See Figure		See below
1 13/16	187	24.4	115.9	84.1	62	3	146.1	8	23.0 ⁺² / _{-0.5}
2 1/16	200	24.4	128.6	96.8	62	3	158.8	8	23.0 ⁺² / _{-0.5}
2 9/16	232	24.4	148.9	117.1	63	3	184.2	8	26.0 ⁺² / _{-0.5}
3 1/16	270	25.4	177.6	145.8	72	3	215.9	8	29.0 ⁺² / _{-0.5}
4 1/16	316	28.2	215.9	174.6	88	3	258.8	8	32.0 ⁺² / _{-0.5}
5 1/8	357	33.0	254.6	213.3	99	3	300.0	12	32.0 ⁺² / _{-0.5}
7-1/16	480	36.8	348.5	307.3	130	5	403.4	12	42 ^{+2.5} / _{-0.5}
9	552	36.8	414.4	373.0	158	5	476.3	16	42 ^{+2.5} / _{-0.5}
11	654	46.6	480.9	439.6	180	5	565.2	16	48 ^{+2.5} / _{-0.5}
13 5/8	768	53.5	566.7	525.4	215	5	673.1	20	51 ^{+2.5} / _{-0.5}